

EXISTING TO REMAIN

EXISTING TO REMAIN

EXISTING TO REMAIN

EXISTING TO REMAIN

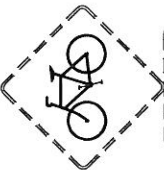
0700-1-60

WELCOME TO CITY OF DEERFIELD BEACH

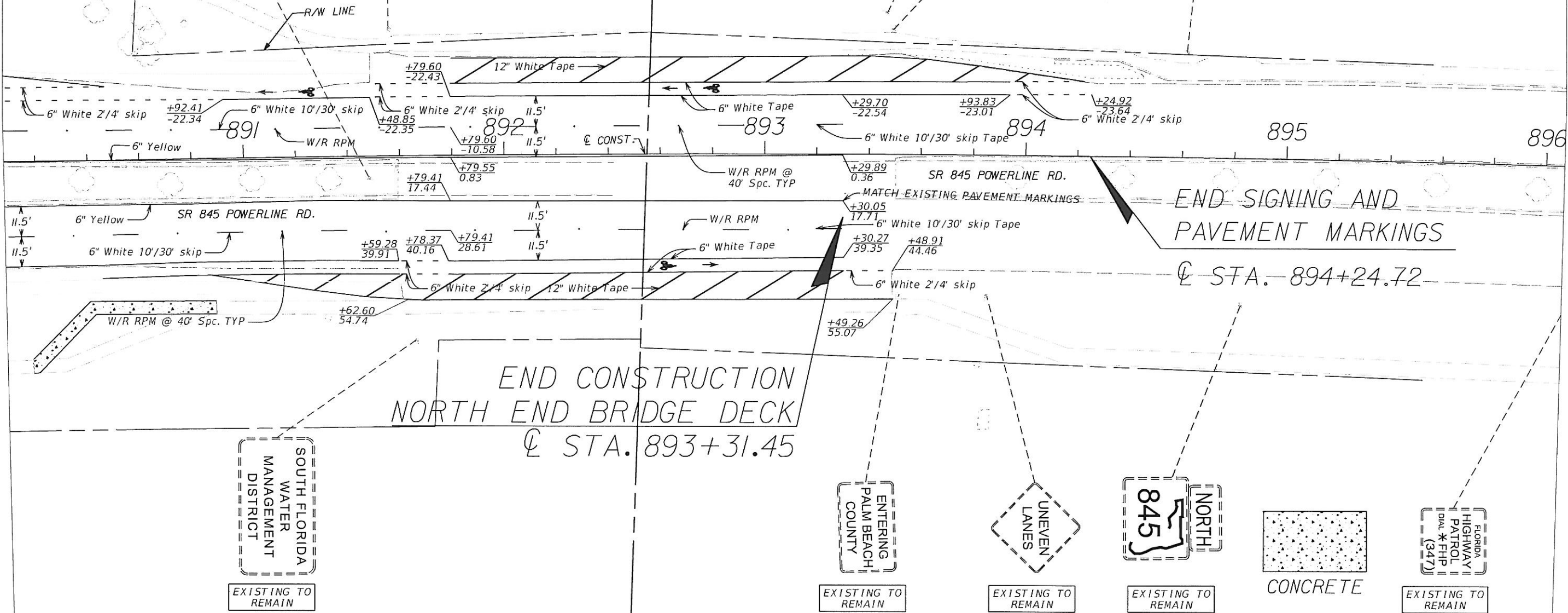
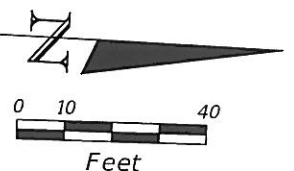
ENTERING BROWARD COUNTY

SOUTH FLORIDA WATER MANAGEMENT DISTRICT

LEAVING LEAVING PALM BEACH COUNTY



SHARE THE ROAD



END CONSTRUCTION NORTH END BRIDGE DECK
@ STA. 893+31.45

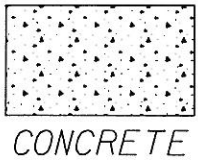
END SIGNING AND PAVEMENT MARKINGS
@ STA. 894+24.72

EXISTING TO REMAIN SOUTH FLORIDA WATER MANAGEMENT DISTRICT

EXISTING TO REMAIN ENTERING PALM BEACH COUNTY

EXISTING TO REMAIN UNEVEN LANES

EXISTING TO REMAIN 845 NORTH



CONCRETE

EXISTING TO REMAIN FLORIDA HIGHWAY PATROL DIAL * FHP (347)

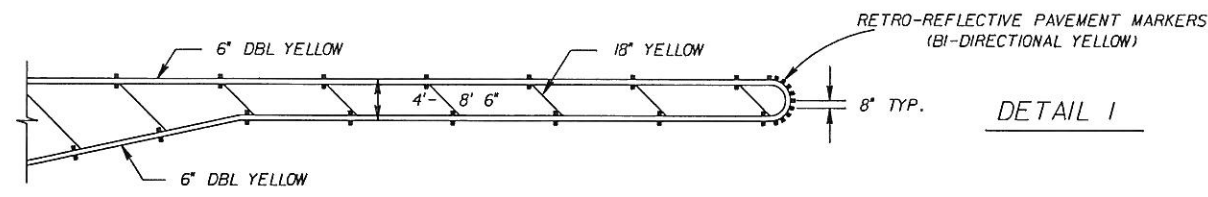
REVISIONS				ENGINEER OF RECORD SCOTT PETERSON, P.E. P.E. NO. 52740 3400 WEST COMMERCIAL BLVD FORT LAUDERDALE, FL 33309 954-777-4416	STATE OF FLORIDA DEPARTMENT OF TRANSPORTATION			SIGNING AND PAVEMENT MARKINGS	SHEET NO. S-16
DATE	DESCRIPTION	DATE	DESCRIPTION		ROAD NO.	COUNTY	FINANCIAL PROJECT ID		
					845	BROWARD	430605-1-52-01		

\$USERS

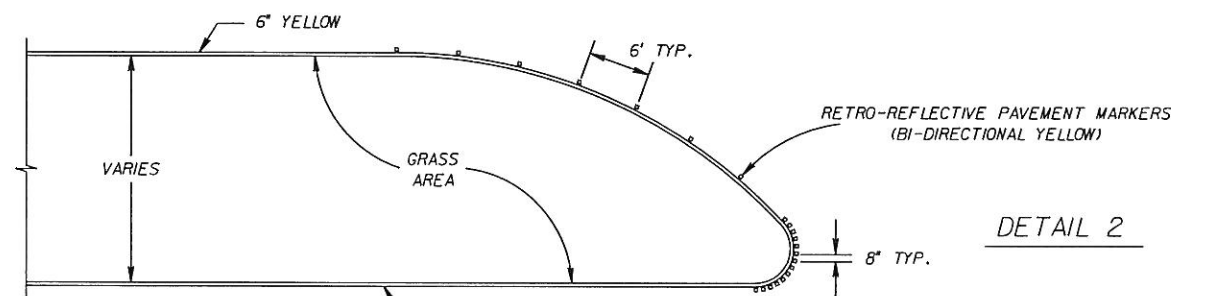
\$DATES

\$TIMES

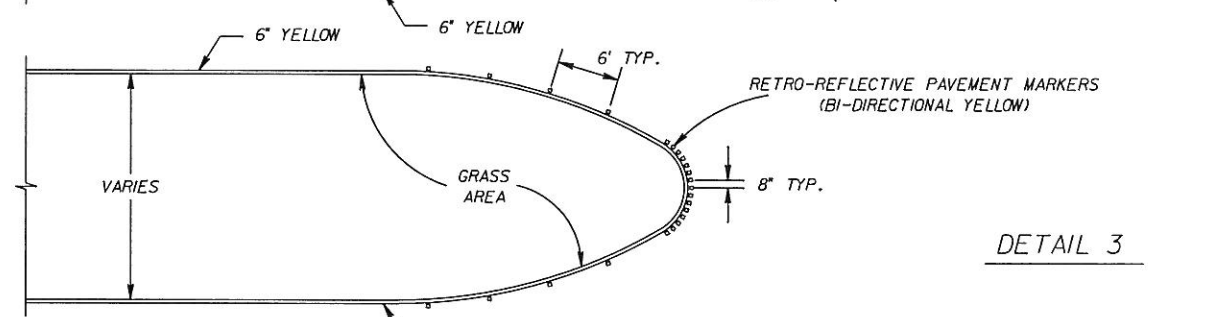
\$FILES



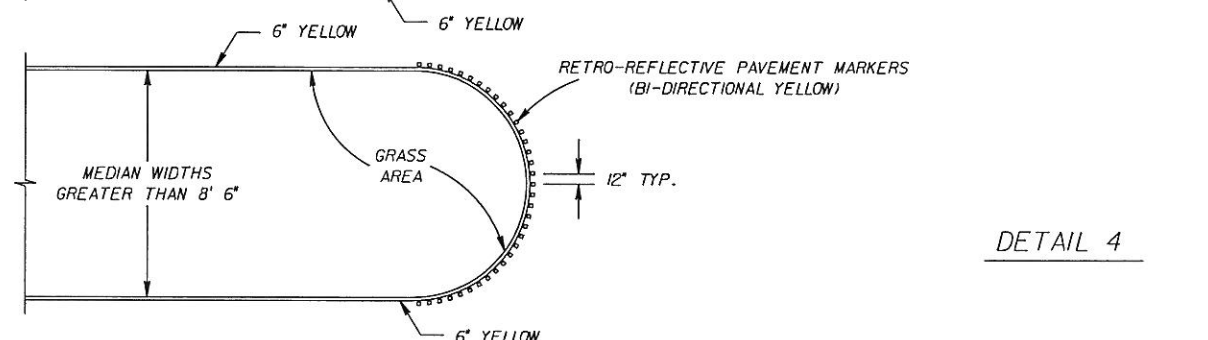
DETAIL 1



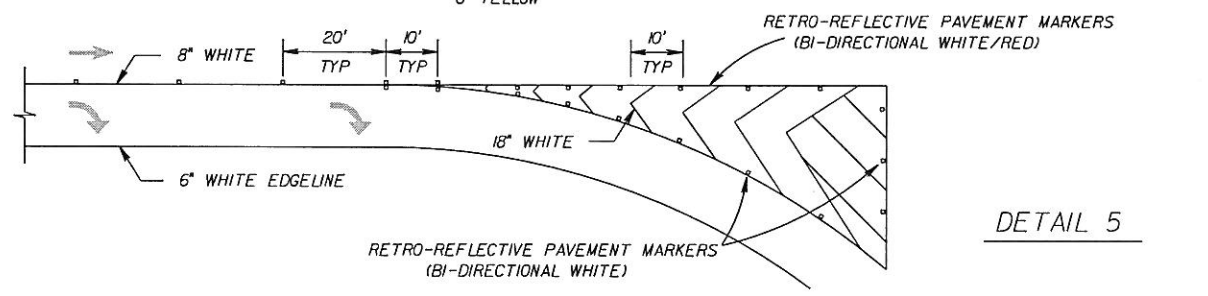
DETAIL 2



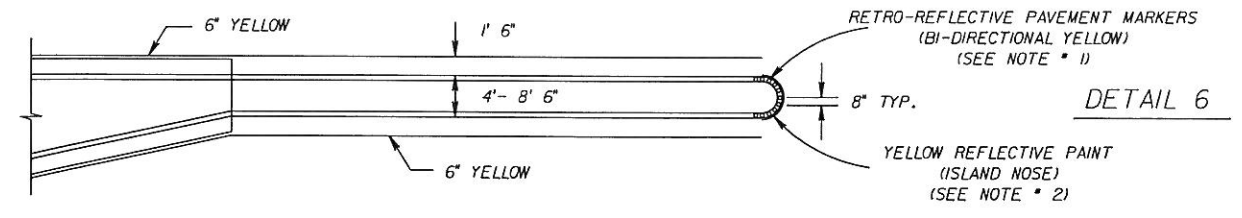
DETAIL 3



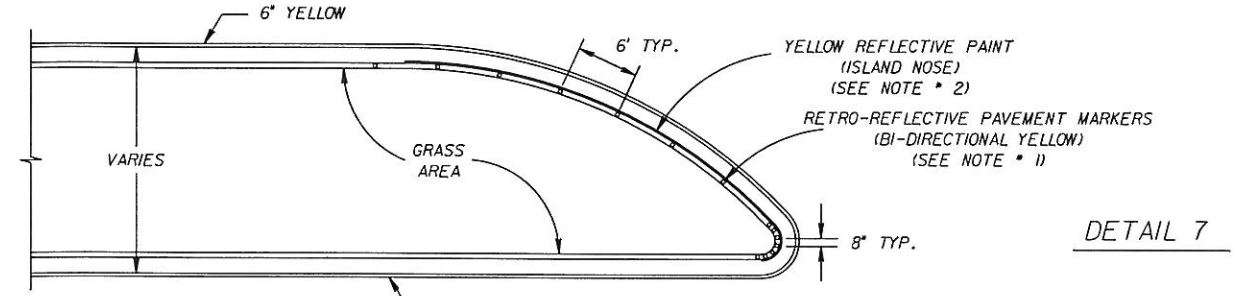
DETAIL 4



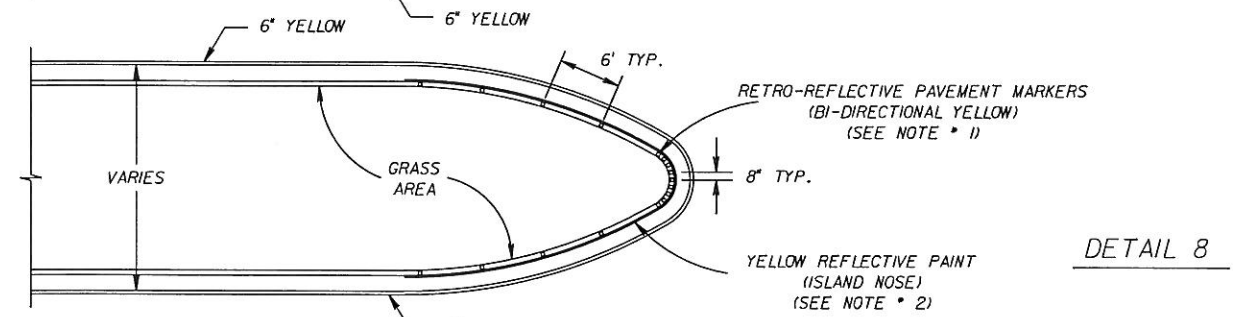
DETAIL 5



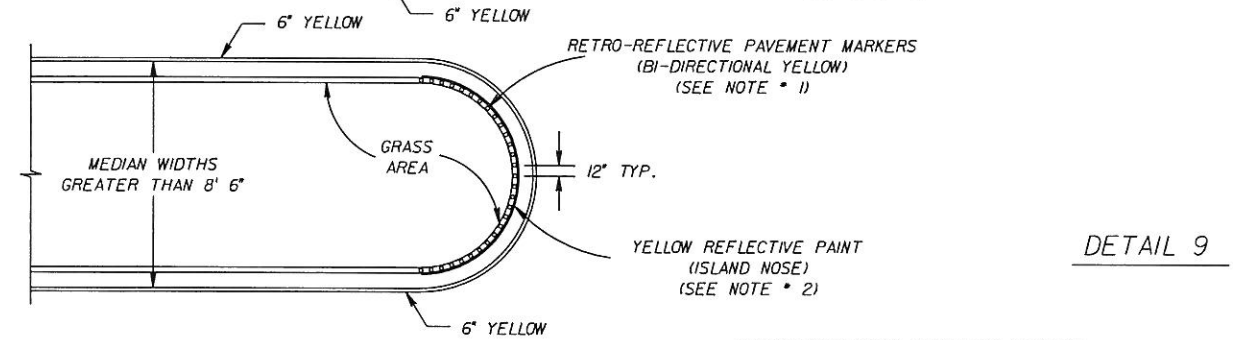
DETAIL 6



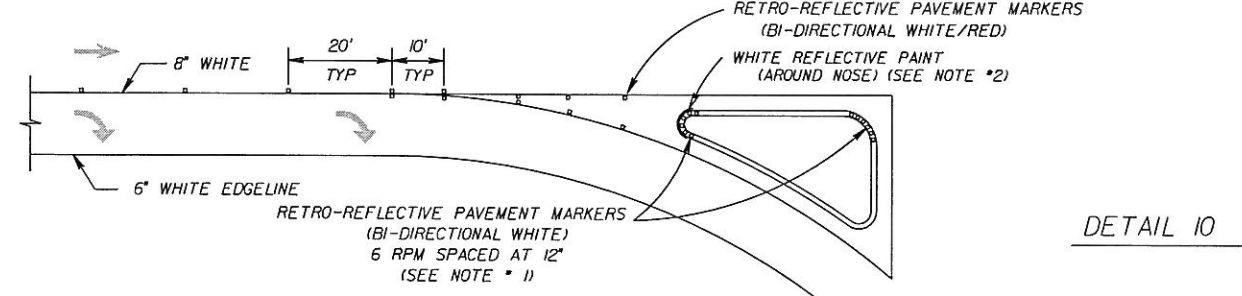
DETAIL 7



DETAIL 8



DETAIL 9

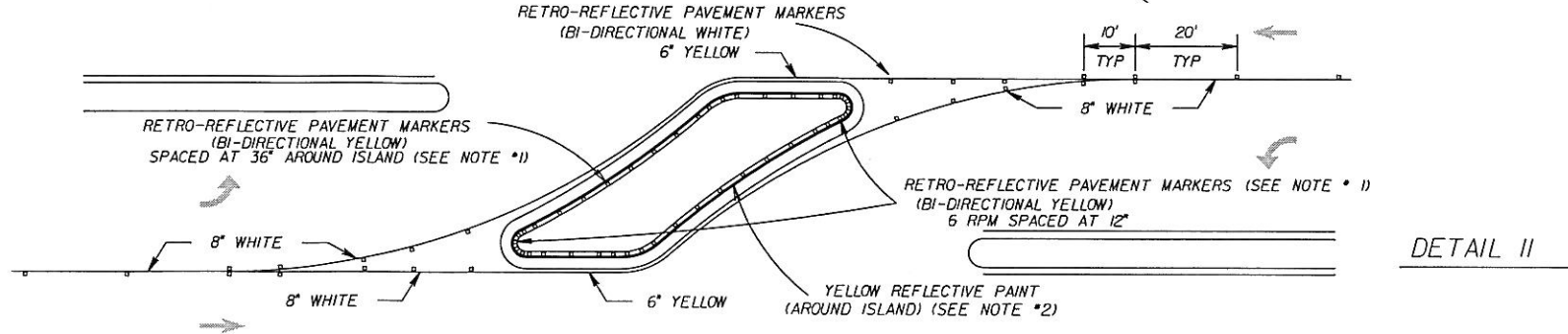


DETAIL 10

NOTES:

1. RETRO-REFLECTIVE PAVEMENT MARKERS SHALL BE INSTALLED ON TOP OF THE CURB (TYPE "D" OR "F") IN ACCORDANCE WITH SECTION 706 OF THE GOVERNING SPECIFICATIONS AND APPLICABLE SPECIAL PROVISIONS. THE RETRO-REFLECTIVE PAVEMENT MARKERS SHALL BE INSTALLED WITHIN 72 HOURS OF CONSTRUCTION OF THE ISLAND NOSE.
2. FURNISH AND INSTALL REFLECTIVE PAINT ON THE FACE OF CURB FOR THE LIMITS SHOWN IN THE ABOVE DETAILS. THE MINIMUM WET FILM THICKNESS FOR ALL PAINTED AREAS SHALL BE 15 MILS.

→ DIRECTION OF TRAFFIC



DETAIL 11

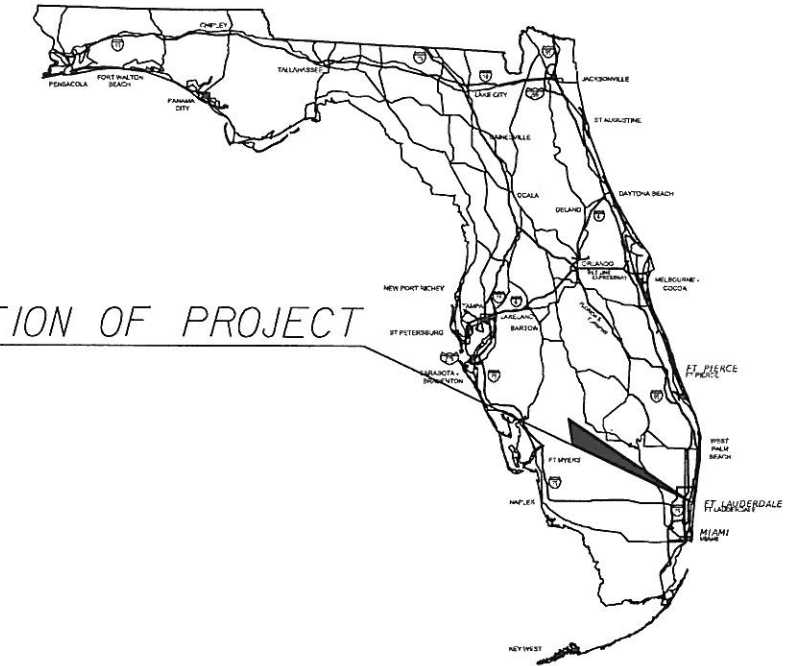
REVISIONS				ENGINEER OF RECORD		STATE OF FLORIDA			TYPICAL RPM PLACEMENT AT TRAFFIC CONTROL ISLANDS	SHEET NO.
DATE	DESCRIPTION	DATE	DESCRIPTION	SCOTT PETERSON, P.E. P.E. NO. 52740 3400 WEST COMMERCIAL BLVD FORT LAUDERDALE, FL 33309 954-777-4416		DEPARTMENT OF TRANSPORTATION				
				ROAD NO.	COUNTY	FINANCIAL PROJECT ID				
				845	BROWARD	430605-1-52-01			S-19	

**STATE OF FLORIDA
DEPARTMENT OF TRANSPORTATION**

CONTRACT PLANS

FINANCIAL PROJECT ID 430605-1-52-01
BROWARD COUNTY (86065)
STATE ROAD NO. 845 (POWERLINE ROAD)

SIGNALIZATION PLANS



LOCATION OF PROJECT

INDEX OF SIGNALIZATION PLANS

SHEET NO.	SHEET DESCRIPTION
T-1	KEY SHEET
T-2	TABULATION OF QUANTITIES
T-3	GENERAL NOTES
T-4 - T-7	SIGNALIZATION PLAN

SIGNALIZATION SHOP DRAWINGS
TO BE SUBMITTED TO:
MORAYMA OCHOA
DISTRICT IV STRUCTURES OFFICE
3400 WEST COMMERCIAL BLVD.
FORT LAUDERDALE, FL 33309

PLANS PREPARED BY:
AL SHAIBAIE P.E.
STEPHEN SHREIM
BENJAMIN RESTREPO
DISTRICT IV OFFICE
3400 WEST COMMERCIAL BLVD.
FT. LAUDERDALE, FL 33309
954 777-4473
954 777-4475
954 777-4337

NOTE: THE SCALE OF THESE PLANS MAY
HAVE CHANGED DUE TO REPRODUCTION.

KEY SHEET REVISIONS		
DATE	BY	DESCRIPTION

SIGNALIZATION PLANS
ENGINEER OF RECORD: ALI A. SHAIBAIE

P.E. NO. 51572

FISCAL YEAR	SHEET NO.
15	T-1

FDOT PROJECT MANAGER: SCOTT PETERSON, P.E.

TABULATION OF QUANTITIES

PAY ITEM NO.	DESCRIPTION	UNIT	SHEET NUMBERS																				TOTAL THIS SHEET		GRAND TOTAL		REF. SHEET
			T-4		T-5		T-6		T-7																		
			PLAN	FINAL	PLAN	FINAL	PLAN	FINAL	PLAN	FINAL	PLAN	FINAL	PLAN	FINAL	PLAN	FINAL	PLAN	FINAL	PLAN	FINAL	PLAN	FINAL					
630-2-12	DIRECTIONAL BORE (UG OR UP)	LF	380		410		500		420													1710		1710			
632-7-1	SIGNALS-CABLE, F&I WITHIN INTERSECTION	PI	1		1		1		1													4		4			
635-2-11	SIGNALS-PULL & JUNCTION BOXES, F&I, PULL BOX	EA	6		6		8		4													24		24			
635-2-40	SIGNALS-PULL & JUNCTION BOXES, RELOCATE	EA	-		-		6		-													6		6			
646-1-11	ALUMINUM SIGNALS POLES, PEDESTAL	EA	5		6		-		4													15		15			
653-191	PEDESTRIAN SIGNAL, F&I, ONE WAY	AS	4		4		8		4													20		20			
653-192	PEDESTRIAN SIGNAL, F&I, TWO WAY	AS	1		2		-		2													5		5			
665-1-11	PEDESTRIAN DETECTOR, F&I, STANDARD	EA	6		8		8		8													30		30			
670-5-400	TRAFFIC CONTROLLER ASSEMBLY, MODIFY	AS	1		1		1		1													4		4			
690-20	SIGNAL PEDESTRIAN ASSEMBLY, REMOVAL	EA	6		8		8		8													30		30			
690-31	SIGNAL PEDESTAL - REMOVAL	EA	4		1		1		1													7		7			
690-70	DETECTOR PEDESTRIAN ASSEMBLY, REMOVE	EA	6		8		8		8													30		30			
690-90	REMOVE CONDUIT AND CABELING	PI	1		1		1		1													4		4			
690-100	SIGNAL EQUIPMENT, MISCELANEOUS REMOVE	PI	1		1		1		1													4		4			
700-3-601	SIGN PANEL (REMOVE)	EA	-		2		-		4													6		6			
700-5-21	INTERNALLY ILLUMINATED SIGN, UP TO 12 SF, F&I	EA	-		2		-		2													4		4			
700-5-22	INTERNALLY ILLUMINATED SIGN, (12-18 SF), F&I	EA	-		2		-		2													4		4			

REVISIONS				ENGINEER OF RECORD: ALI A. SHAIBAIE, P.E. *51572 3400 W. COMMERCIAL BLVD. FT. LAUDERDALE, FL. 33309	STATE OF FLORIDA DEPARTMENT OF TRANSPORTATION			TABULATION OF QUANTITIES	SHEET NO. T-2
DATE	DESCRIPTION	DATE	DESCRIPTION		ROAD NO.	COUNTY	FINANCIAL PROJECT ID		
					SR 845	BROWARD	430605-1-52-01		

SIGNALIZATION GENERAL NOTES AND PAY ITEM NOTES

PAY ITEM NOTES:

- 101-1 THE CONTRACTOR SHALL PROVIDE ALL NECESSARY EQUIPMENT INCLUDING A TWO-MAN BUCKET OR PLATFORM LIFT TRUCK FOR THE USE BY THE ENGINEER DURING INSPECTION OF TRAFFIC SIGNALS.
 - 635-2-II IN AREAS WHERE PULL BOXES, PEDESTALS AND PEDESTRIAN SIGNALS ARE INSTALLED SIDEWALK RESTORATION SHALL BE COVERED UNDER THESE PAY ITEMS.
 - 635-2-12
 - 646-1-II ALL PEDESTALS SHALL BE PROVIDED WITH TRANSFORMER TYPE BASES.
 - 653-19I AT THE TIME OF PROJECT DESIGN ALL PEDESTRIAN SIGNALS HAVE BEEN VERIFIED AND COORDINATED WITH BROWARD COUNTY FOR AUDIBLE SYSTEM. IT IS THE CONTRACTOR RESPONSIBILITY TO CHECK ALL THE PEDESTRIAN SIGNALS IN ADVANCE. THE CONTRACTOR SHALL BID THE PROJECT ACCORDINGLY IF ANY AUDIBLE SYSTEM IS IN PLACE.
 - 653-192
 - 700-5-2I ALL INTERNALLY ILLUMINATED SIGNS SHALL BE DOUBLE-SIDED, LED AND SHALL HAVE A MINIMUM LIGHT OUTPUT RATING OF 30 LUMENS PER WATT ACROSS THE SIGN PANEL.
 - 700-5-22
 - 690-10 THE CONTRACTOR SHALL DELIVER ALL REMOVED TRAFFIC SIGNAL EQUIPMENT, EXCEPT CONCRETE STRAIN POLES, TO BROWARD COUNTY TRAFFIC ENGINEERING DIVISION AT THE ADDRESS PROVIDED.
 - THRU THE CONTRACTOR SHALL CONTACT BCTED (7) FULL WORKING DAYS PRIOR TO DELIVERY.
 - 690-100 CONTRACTOR SHALL COORDINATED THE REMOVAL OF ALL ITEMS WITH THE SLAP TEAM.
- BROWARD COUNTY TRAFFIC ENGINEERING DIVISION
2300 WEST COMMERCIAL BOULEVARD
FORT LAUDERDALE, FL. 33309
- WAREHOUSE MANAGER IS TO BE CONTACTED AT 954-484-9600, EXT. 276 AT LEAST 48 HOURS PRIOR TO DELIVERY.

BROWARD COUNTY TRAFFIC ENGINEERING COMMUNICATIONS NOTES:

1. THE AGENCY RESPONSIBLE FOR MAINTENANCE OF THE TRAFFIC SIGNALS AND RELATED EQUIPMENT IS BROWARD COUNTY TRAFFIC ENGINEERING DIVISION (BCTED). IF FIBER OPTIC PULL BOXES ALREADY EXIST AT AN INTERSECTION, NO ADDITIONAL FIBER OPTIC PULL BOXES WILL BE NEEDED.
2. IF THERE ARE ANY COPPER INTERCONNECT CABLE/S WITHIN THE PROJECT LIMITS OR WITHIN 1500 FEET OF THE PROJECT LIMITS, CONTACT THE TRAFFIC SIGNAL SUPERVISOR AT TECOMMUNICATIONS@BROWARD.ORG OR 954-847-2752.
3. IF THERE ARE FIBER OPTIC CABLE/S WITHIN THE PROJECT LIMITS OR WITHIN 1500 FEET OF THE PROJECT LIMITS CONTACT THE COMMUNICATIONS MANAGER AT TECOMMUNICATIONS@BROWARD.ORG OR 954-847-2745. ALL BCTED COMMUNICATIONS CABLES/CONDUIT SHALL BE LOCATED A MINIMUM OF 48 HOURS IN ADVANCE. NOTIFICATION SHALL INCLUDE CONTACT PERSON, TELEPHONE
4. CONTACT THE COPPER INTERCONNECT CABLE & FIBER NOTIFICATION CONTACT PERSON WHEN COMMUNICATION TO AN INTERSECTION MUST BE DISRUPTED BY A CONTRACTOR TO PERFORM WORK. THE CONTRACTOR SHALL PROVIDE TWO DAY ADVANCE NOTICE IN WRITING TO THE BROWARD COUNTY TRAFFIC ENGINEERING DIVISION. THE NOTIFICATION SHALL BE CONVEYED VIA ELECTRONIC MAIL (EMAIL) TO THE TRAFFIC SIGNAL SUPERVISOR AT COMMUNICATIONS@BROWARD.ORG. NOTIFICATION SHALL INCLUDE CONTACT PERSON, TELEPHONE NUMBER, PURPOSE, LOCATION AND DURATION. THE DISRUPTION SHALL LAST FOR NO MORE THAN 3 CONSECUTIVE BUSINESS DAYS, WHERE POSSIBLE. THE DISRUPTION SHALL BE DURING OFF PEAK HOURS BEGINNING AT 9:00 AM AND ENDING AT 3:00 PM.
5. FIBER OPTIC CABLE NOTIFICATION CONTACT PERSON WHEN COMMUNICATIONS TO AN INTERSECTION MUST BE DISRUPTED BY A CONTRACTOR TO PERFORM WORK, THE CONTRACTOR SHALL PROVIDE TWO DAY ADVANCE NOTICE IN WRITING TO THE BROWARD COUNTY TRAFFIC ENGINEERING DIVISION. THIS NOTIFICATION SHALL BE CONVEYED VIA ELECTRONIC MAIL (EMAIL) TO THE COMMUNICATIONS MANAGER AT TECOMMUNICATIONS@BROWARD.ORG. NOTIFICATION SHALL INCLUDE CONTACT PERSON, TELEPHONE NUMBER, PURPOSE, LOCATION AND DURATION. THE DISRUPTION SHALL LAST NO MORE THAN 3 CONSECUTIVE BUSINESS DAYS. WHERE POSSIBLE, THE DISRUPTION SHALL BE DURING OFF PEAK HOURS BEGINNING AT 9:00AM AND ENDING AT 3:00PM.

SEE ROADWAY PLANS FOR BCTED COMMUNICATIONS CABLE AND CONDUIT.

1. THE AGENCY RESPONSIBLE FOR MAINTENANCE OF THE TRAFFIC SIGNALS AND RELATED COMMUNICATIONS EQUIPMENT IS BROWARD COUNTY TRAFFIC ENGINEERING DIVISION (BCTED). ALL TRAFFIC SIGNAL AND RELATED COMMUNICATION AND AUXILIARY SYSTEM, WHEN USING PAY ITEM SERIES: 632, 633, 635, 650, 660, 670, 683, 684 AND 685 FOR THIS CONTRACT, SHALL BE COMPATIBLE WITH BROWARD COUNTY'S CENTRAL COMPUTER NETWORK SYSTEM. PRIOR TO PURCHASING ANY OF THE ABOVE PRODUCTS, ENSURE THEY HAVE BEEN APPROVED FOR SYSTEM COMPATIBILITY BY THE MAINTAINING AGENCY. WHEN PRE-EMPTION IS CALLED FOR UNDER PAY ITEM FOOTNOTE 670-5-13X, GPS PRE-EMPTION EQUIPMENT SHALL BE SUPPLIED WITH THE TRAFFIC CONTROL ASSEMBLY. VERIFY WITH THE MAINTAINING AGENCY THAT THE EQUIPMENT IS COMPATIBLE WITH THE CURRENT PRE-EMPTION SYSTEM PRIOR TO PURCHASING.

2. THE CONTRACTOR SHALL NOTIFY THE APPROPRIATE UTILITY COMPANY TWO (2) FULL WORKING DAYS IN ADVANCE OF ANY EXCAVATION INVOLVING THE UTILITIES SO THAT A COMPANY REPRESENTATIVE CAN BE PRESENT. THE LOCATION OF THE UTILITIES SHOWN IN THE PLANS ARE APPROXIMATE ONLY. THE EXACT LOCATION SHALL BE DETERMINED BY THE CONTRACTOR DURING CONSTRUCTION.

UTILITY OWNERS

COMPANIES	CONTACT PERSON	TELEPHONE NUMBERS
AT & T (TEL. & FIBER)	OTIS KEEVE	954 723-2540
BROWARD COUNTY TRAFFIC ENGINEERING	GREG LOVAGLIO	954 847-2725
FPL DISTRIBUTION	BYRON SAMPLE	954 321-2056
FPL FIBERNET	JAKE MARRONEY	561 662-7851
TECO PEOPLE'S GAS	MAX CHAMORRO	954 234-1036
CITY OF DEERFIELD BEACH UTILITIES	BERNARD BUXTON	954 480-4432
COMCAST CABLE	LEONARD MAXWELL-NEWBOLD	954 447-8405
BROWARD COUNTY WATER & WASTEWATER	CHET WILLIAMS	954 831-0926
BROWARD COUNTY TRAFFIC ENGINEERING	ED GARABOLDI	954 847-2701

3. THE CONTRACTOR SHALL PROVIDE (5) SETS OF MARKED-UP (AS-BUILT) CONSTRUCTION PLANS, SEVEN (7) DAYS PRIOR TO SIGNAL INSPECTION FOR ACCEPTANCE.
4. ALL STANDARD PULL BOXES SHALL BE STAMPED "BROWARD COUNTY TRAFFIC SIGNAL" ON THE COVER. LARGE PULL BOX DIMENSIONS SHALL BE 24"X36"X36" DEEP, AND STAMPED "BROWARD COUNTY TRAFFIC FIBER OPTICS" ON THE COVER AND FOR FIBER SPLICE BOXES SIZE SHALL BE 30"X48"X36" DEEP WITH 2-LIDS.
5. THE CONTRACTOR SHALL CONTACT FT. LAUDERDALE OPERATIONS CENTER'S SIGNALIZATION/LIGHTING COORDINATOR FOR ALL SIGNALIZATION INSPECTIONS AT FT. LAUDERDALE OPERATIONS CENTER (SLAP TEAM), ANDREW POERIO AT 954 776-4300 OR 954 740-1986.
6. ALL EXISTING SIGNALIZATION EQUIPMENT THAT IS TO REMAIN, IS ASSUMED TO BE IN GOOD WORKING ORDER UNLESS BCTED IS NOTIFIED IN WRITING PRIOR TO THE START OF CONSTRUCTION. ANY SUBSEQUENT DAMAGE TO THE SIGNAL EQUIPMENT SHALL BE REPAIRED BY THE CONTRACTOR AT NO EXPENSE TO THE DEPARTMENT.
7. WHEN COMMUNICATIONS TO AN INTERSECTION MUST BE DISRUPTED BY A CONTRACTOR TO PERFORM WORK, THE CONTRACTOR SHALL PROVIDE AN ADVANCE TWO DAY NOTICE IN WRITING TO THE BROWARD COUNTY TRAFFIC ENGINEERING DIVISION. THIS NOTIFICATION SHALL BE CONVEYED VIA ELECTRONIC MAIL (EMAIL) TO THE COMMUNICATIONS MANAGER AT BRHENDERSON@BROWARD.ORG. NOTIFICATION SHALL INCLUDE CONTACT PERSON, TELEPHONE NUMBER, LOCATION AND DURATION. THE DISRUPTION SHALL LAST FOR NO MORE THAN 3 CONSECUTIVE BUSINESS DAYS. WHERE POSSIBLE, THE DISRUPTION SHALL BE AT OFF PEAK HOURS BEGINNING AT 9:00AM AND ENDING AT 3:00P.M.
8. THE CONTRACTOR SHALL BE REQUIRED TO BECOME FAMILIAR WITH AND COMPLY WITH BCTED'S INSPECTION PROCEDURE.

REVISIONS				ENGINEER OF RECORD: ALI A. SHAIBAIE, P.E. *51572 3400 W. COMMERCIAL BLVD. FT. LAUDERDALE, FL. 33309	STATE OF FLORIDA DEPARTMENT OF TRANSPORTATION			GENERAL NOTES	SHEET NO. T-3
DATE	DESCRIPTION	DATE	DESCRIPTION		ROAD NO.	COUNTY	FINANCIAL PROJECT ID		
					SR 845	BROWARD	430605-1-52-01		

SIGNAL OPERATION NOTES

- MAJOR STREET IS SR 845 (POWERLINE ROAD). MINOR STREET IS WEST DR.
- EXIST. CONTROLLER & SOP TO REMAIN.
 - PEDESTRIAN MODULES ON TF-2, TF-6 AND TF-4, TF-8. (TO BE DISPLAYED UPON ACTUATION ONLY).
- PEDESTRIAN PUSH BUTTONS AND SIGNS SHALL BE MOUNTED AS SHOWN IN STANDARD INDEX 17784.

REMOVAL ITEMS

SIGNAL REMOVAL		
PAY ITEM	UNIT	QTY
690-20	EA	6
690-31	EA	4
690-70	EA	6
690-90	PI	1
690-100	PI	1

(1 EA) 665-1-11
 (1 EA) 635-2-11
 (1 EA) 646-1-11

(2 EA) 665-1-11
 (2 EA) 635-2-11
 (2 EA) 646-1-11

(1 AS) 670-5-400
 (1 EA) 635-2-11

(1 EA) 646-1-11
 (1 EA) 635-2-11
 (1 EA) 665-1-11

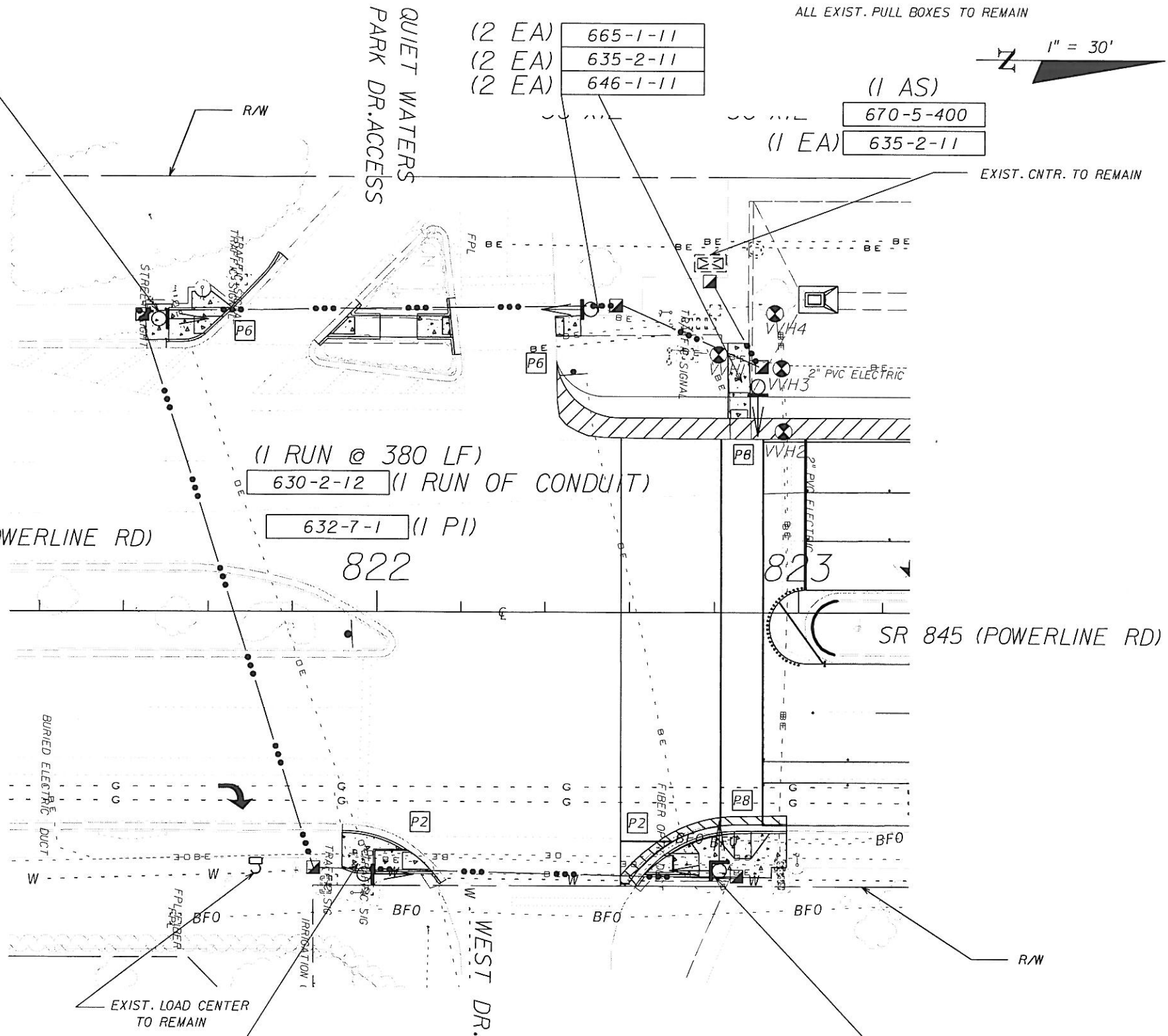
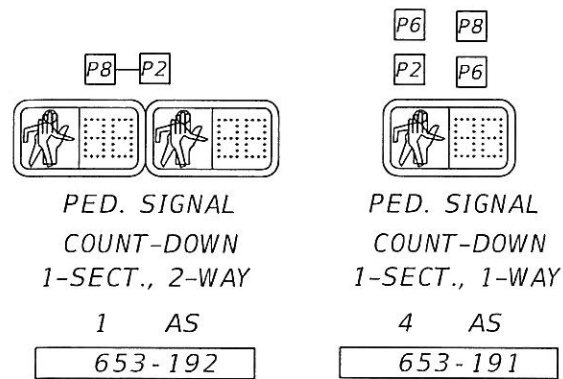
(1 EA) 646-1-11
 (1 EA) 635-2-11
 (2 EA) 665-1-11

ALL EXIST. PULL BOXES TO REMAIN



SR 845 (POWERLINE RD)

SR 845 (POWERLINE RD)



REVISIONS			
DATE	DESCRIPTION	DATE	DESCRIPTION

ENGINEER OF RECORD:
 ALI A. SHAIKAE, P.E. #51572
 3400 W. COMMERCIAL BLVD.
 FT. LAUDERDALE, FL. 33309

STATE OF FLORIDA DEPARTMENT OF TRANSPORTATION		
ROAD NO.	COUNTY	FINANCIAL PROJECT ID
SR 845	BROWARD	430605-1-52-01

SIGNALIZATION PLAN

SHEET NO.
T-4

ALL PULL BOXES TO REMAIN.



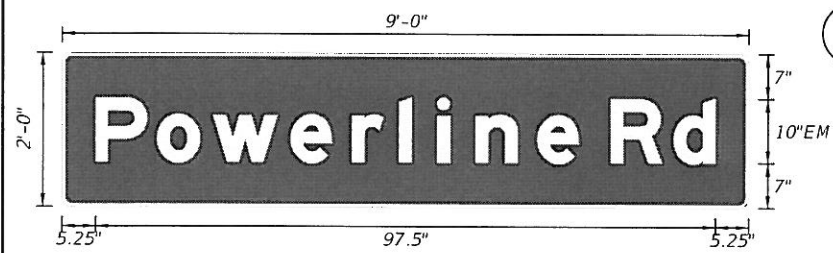
SIGNAL OPERATION NOTES

- MAJOR STREET IS SR 845 (POWERLINE ROAD). MINOR STREET IS SW 4th St.
- EXIST. CONTROLLER & SOP TO REMAIN.
 - PEDESTRIAN MODULES ON TF-2, TF-6 AND TF-4, TF-8. (TO BE DISPLAYED UPON ACTUATION ONLY).
- PEDESTRIAN PUSH BUTTONS AND SIGNS SHALL BE MOUNTED AS SHOWN IN STANDARD INDEX 17784.

- (2 EA) 665-1-11
- (2 EA) 635-2-11
- (2 EA) 646-1-11

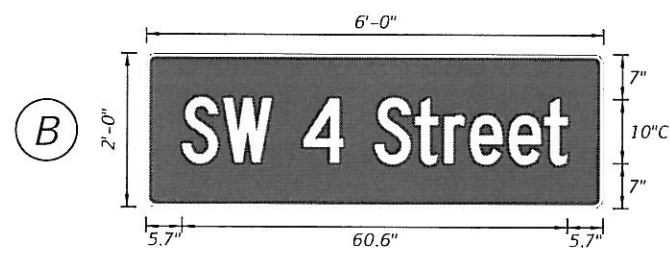
- (2 EA) 665-1-11
- (1 EA) 635-2-11
- (1 EA) 646-1-11

- (1 AS) 670-5-400



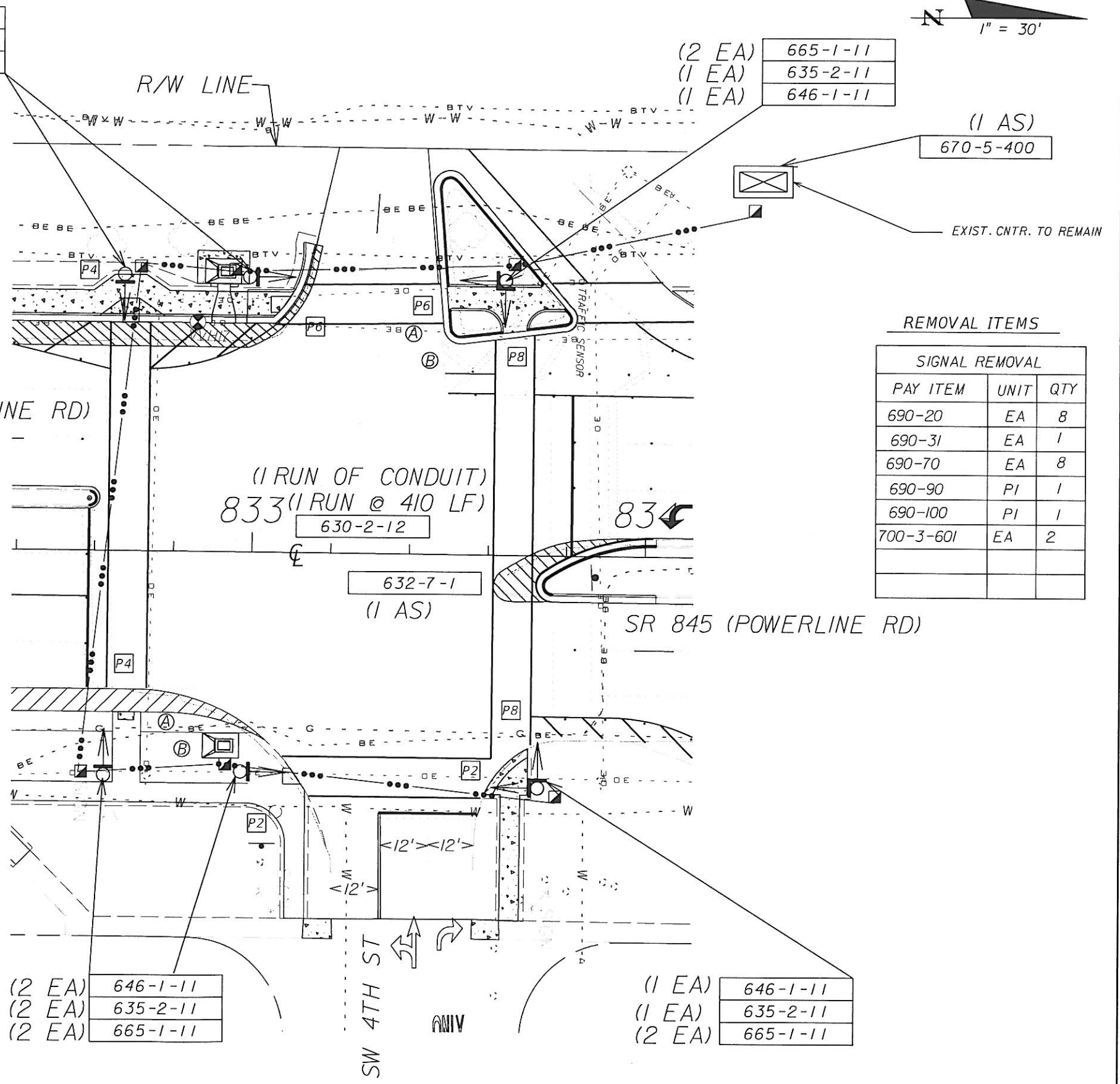
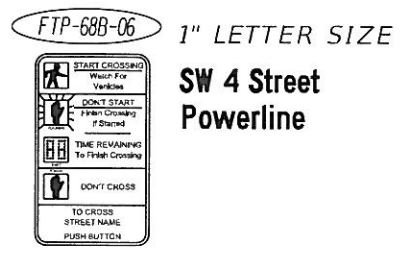
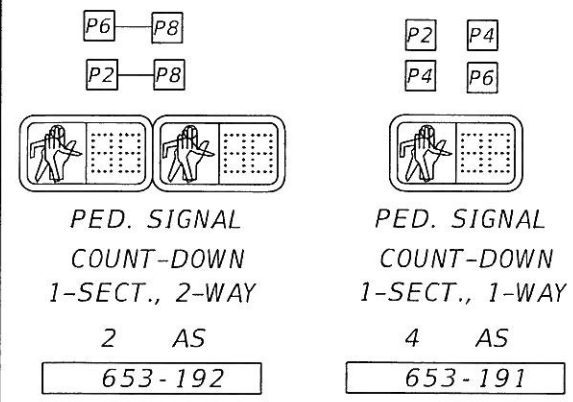
- (2 EA) 700-5-22

BORDER
R=1.5"
TH=0.5"



- (2 EA) 700-5-21

NOTE:
FOR 11L SIGNS USE THE SE AND NW CONCRETE POLES.



REMOVAL ITEMS

SIGNAL REMOVAL		
PAY ITEM	UNIT	QTY
690-20	EA	8
690-31	EA	1
690-70	EA	8
690-90	PI	1
690-100	PI	1
700-3-601	EA	2

- (2 EA) 646-1-11
- (2 EA) 635-2-11
- (2 EA) 665-1-11

- (1 EA) 646-1-11
- (1 EA) 635-2-11
- (2 EA) 665-1-11

REVISIONS			
DATE	DESCRIPTION	DATE	DESCRIPTION

ENGINEER OF RECORD:
ALI A. SHAIBAIE, P.E. *51572
3400 W. COMMERCIAL BLVD.
FT. LAUDERDALE, FL. 33309

STATE OF FLORIDA DEPARTMENT OF TRANSPORTATION		
ROAD NO.	COUNTY	FINANCIAL PROJECT ID
SR 845	BROWARD	430605-1-52-01

SIGNALIZATION PLAN

SHEET NO.
T-5

ALL EXIST. PULL BOXES TO REMAIN UNLESS AS NOTED.

1" = 30'

SIGNAL OPERATION NOTES

- MAJOR STREET IS SR 845 (POWERLINE ROAD). MINOR STREET IS W. HILLSBORO BLVD.
- EXIST. CONTROLLER & SOP TO REMAIN.
 - PEDESTRIAN MODULES ON TF-2, TF-6 AND TF-4, TF-8. (TO BE DISPLAYED UPON ACTUATION ONLY).
- PEDESTRIAN PUSH BUTTONS AND SIGNS SHALL BE MOUNTED AS SHOWN IN STANDARD INDEX 17784.

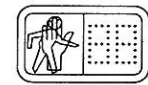
REMOVAL ITEMS

SIGNAL REMOVAL		
PAY ITEM	UNIT	QTY
690-20	EA	8
690-31	EA	1
690-70	EA	8
690-90	PI	1
690-100	PI	1

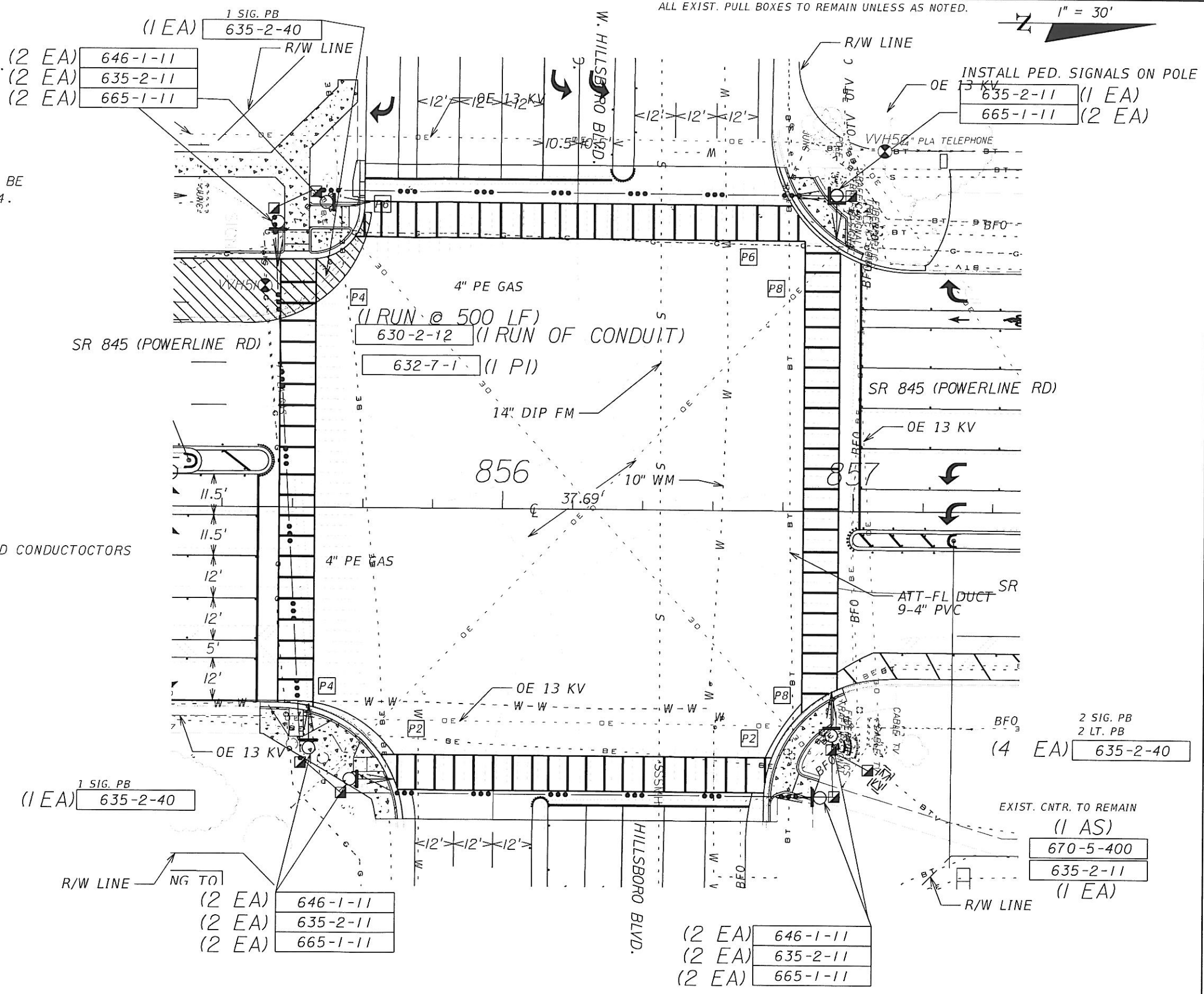
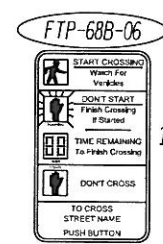
635-2-40

THE PAY ITEM SHALL INCLUDE ALL THE CONDUIT AND CONDUCTOCTORS FOR A COMPLETE ASSEMBLY.

- P2 P2
- P4 P4
- P6 P6
- P8 P8



1" LETTER SIZE
Hillsboro Powerline



REVISIONS			
DATE	DESCRIPTION	DATE	DESCRIPTION

ENGINEER OF RECORD:
ALI A. SHAIBAIE, P.E. *51572
3400 W. COMMERCIAL BLVD.
FT. LAUDERDALE, FL. 33309

STATE OF FLORIDA DEPARTMENT OF TRANSPORTATION		
ROAD NO.	COUNTY	FINANCIAL PROJECT ID
SR 845	BROWARD	430605-1-52-01

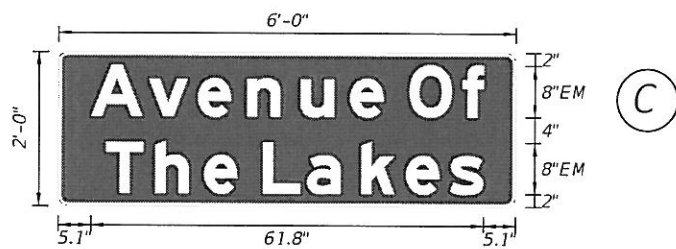
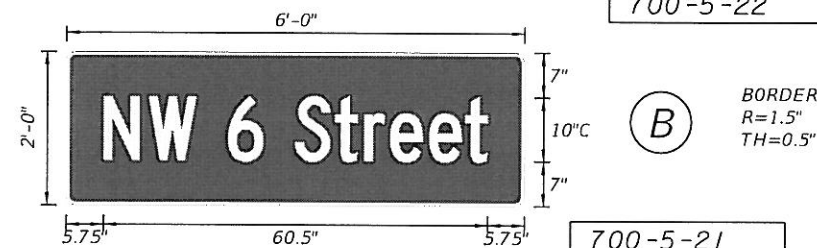
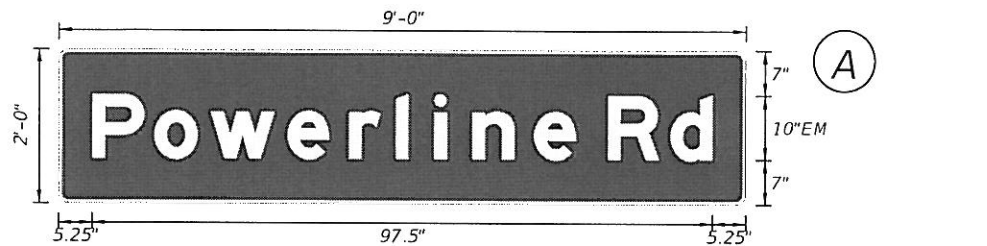
SIGNALIZATION PLAN

SHEET NO.
T-6



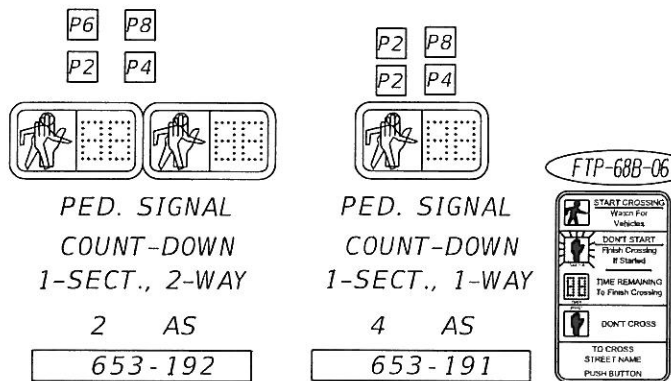
SIGNAL OPERATION NOTES

1. MAJOR STREET IS SR 845 (POWERLINE ROAD).
MINOR STREET IS NW 6TH ST.
2. EXIST. CONTROLLER & SOP TO REMAIN.
 - a. PEDESTRIAN MODULES ON TF-2, TF-6 AND TF-4, TF-8.
(TO BE DISPLAYED UPON ACTUATION ONLY).
3. PEDESTRIAN PUSH BUTTONS AND SIGNS SHALL BE MOUNTED AS SHOWN IN STANDARD INDEX 17784.



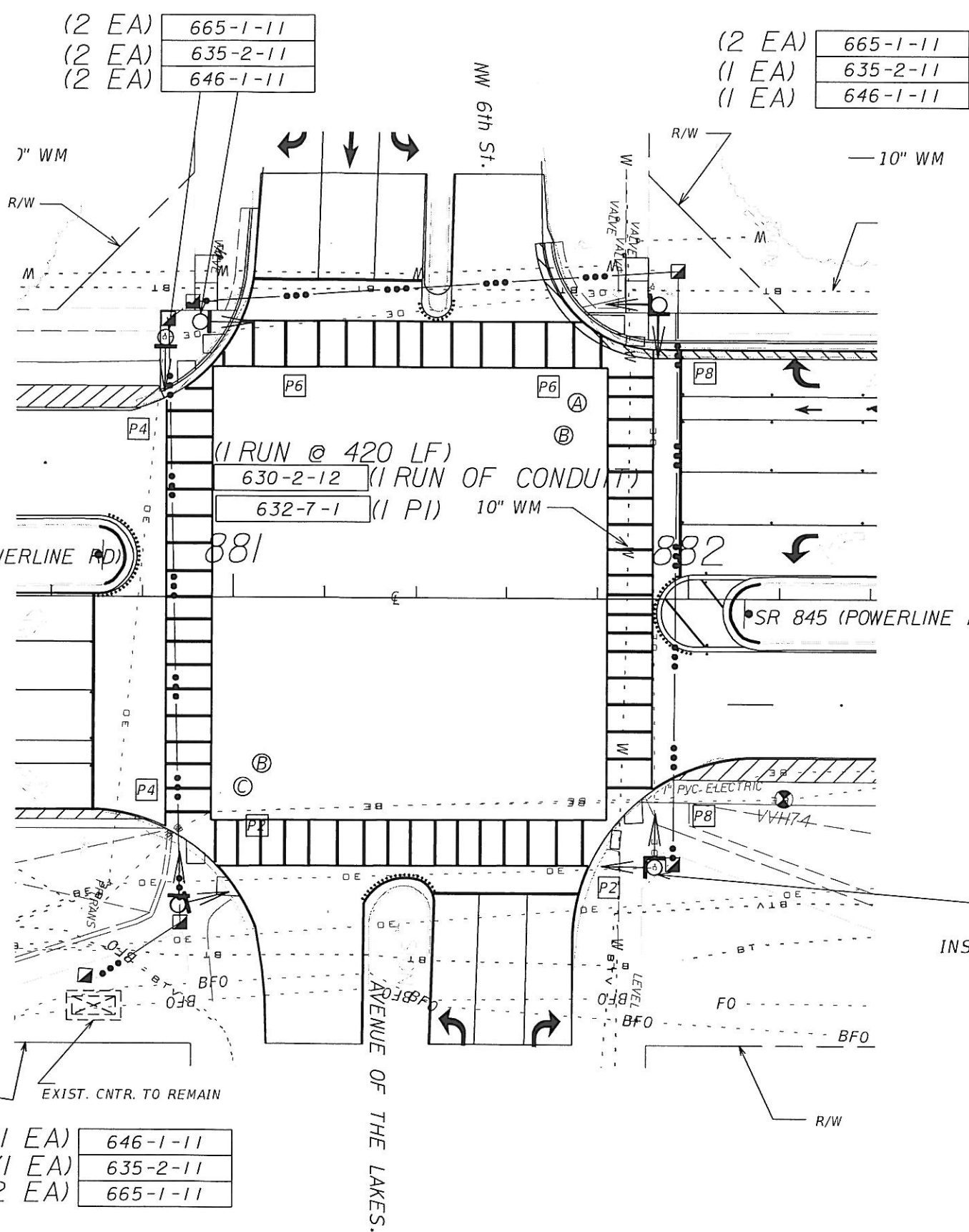
NOTE: 700-5-21 (1 EA)

FOR ILL SIGNS USE THE SE AND NW CONCRETE POLES.



- (35 LF) 630-2-12
- (1 EA) 635-2-11
- (1 EA) 670-5-400

- 1" LETTER SIZE NW 6 Street Ave Of The Lakes Powerline
- (1 EA) 646-1-11
- (1 EA) 635-2-11
- (2 EA) 665-1-11



- (2 EA) 665-1-11
- (1 EA) 635-2-11
- (1 EA) 646-1-11

REMOVAL ITEMS

SIGNAL REMOVAL		
PAY ITEM	UNIT	QTY
690-20	EA	8
690-31	EA	1
690-70	EA	8
690-90	PI	1
690-100	PI	1
700-3-601	EA	4

635-2-11 (1 EA)
665-1-11 (2 EA)
INSTALL PED. SIGNALS ON POLE

REVISIONS				ENGINEER OF RECORD: ALI A. SHAIBAIE, P.E. *51572 3400 W. COMMERCIAL BLVD. FT. LAUDERDALE, FL. 33309	STATE OF FLORIDA DEPARTMENT OF TRANSPORTATION			SHEET NO. T-7
DATE	DESCRIPTION	DATE	DESCRIPTION		ROAD NO.	COUNTY	FINANCIAL PROJECT ID	
					SR 845	BROWARD	430605-1-52-01	